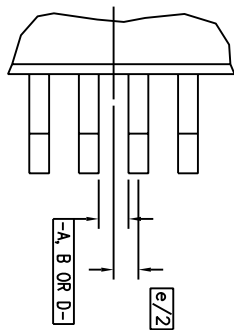
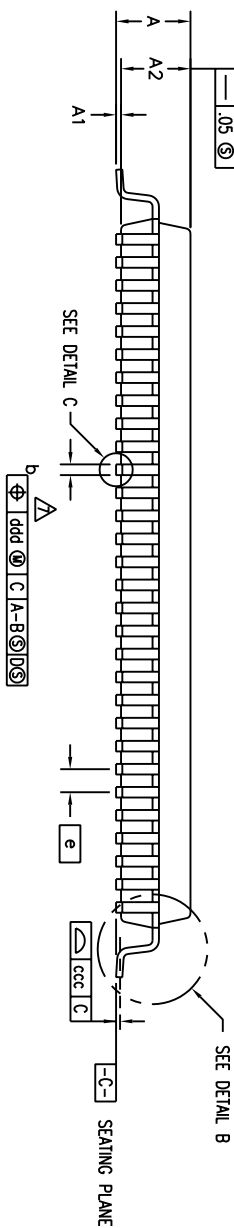
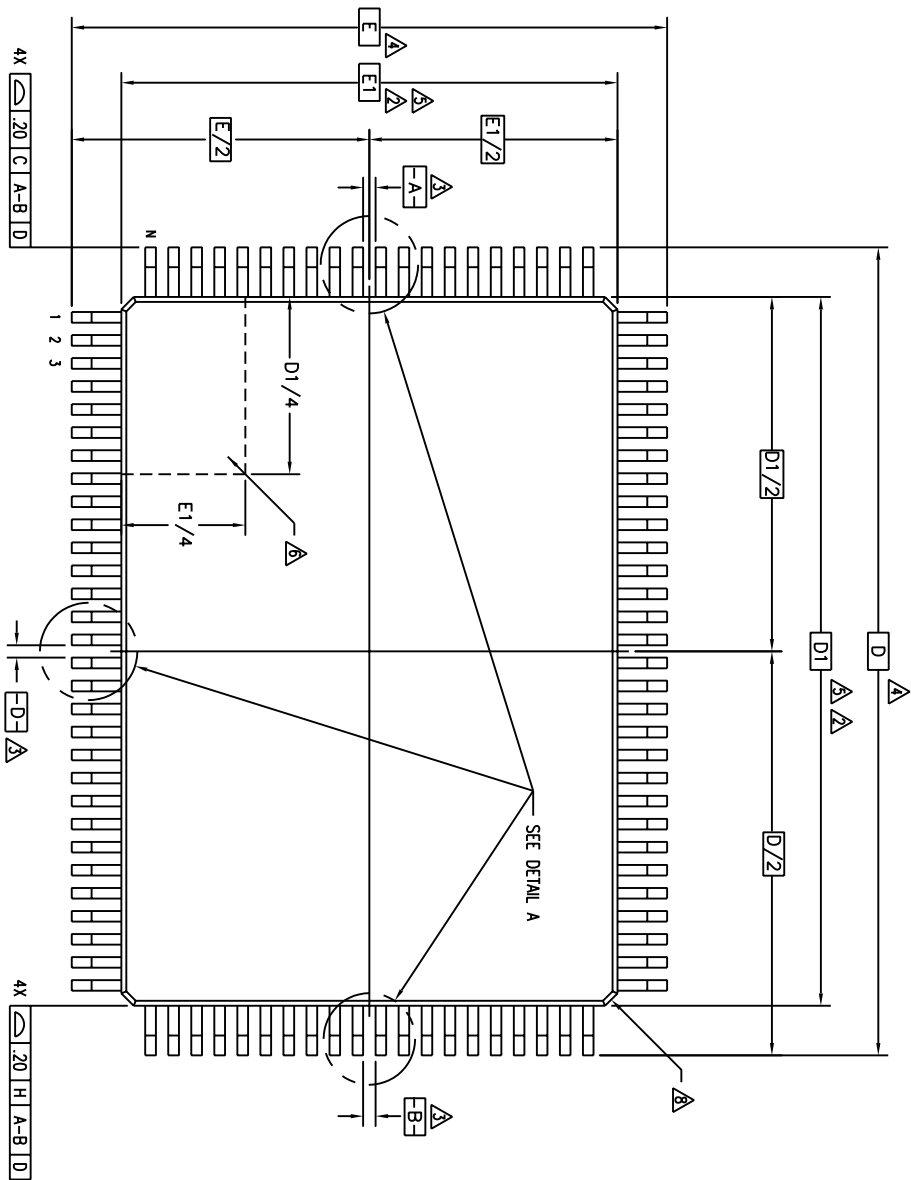


REVISIONS				
DCN	REV	DESCRIPTION	DATE	APPROVED
27389	01	REDRAW TO JEDEC FORMAT	12/12/94	T. VU
	02	CORRECTED DETAIL A	09/13/02	<i>gpa</i>
	03	ADD "GREEN" PKG NOMENCLATURE	10/13/04	<i>SVL 199L</i>

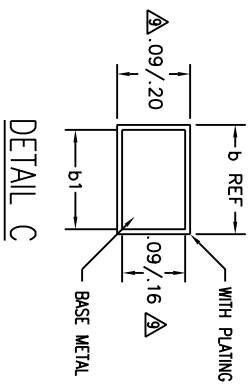
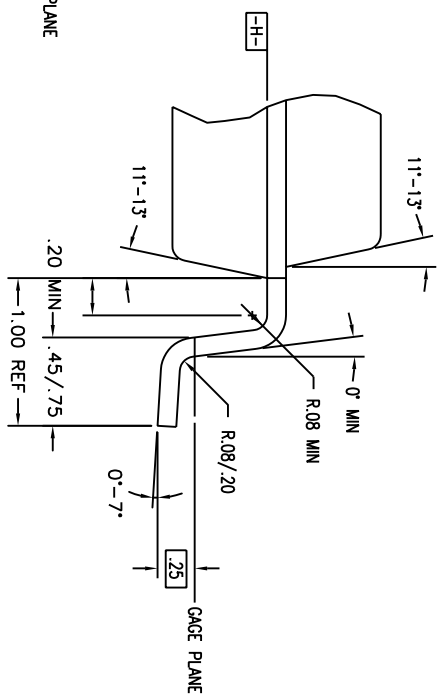
EVEN LEAD SIDES



DETAIL A



DETAIL B



DETAIL C

TOLERANCES UNLESS SPECIFIED
 DECIMAL ANGULAR
 XXX° ±
 XXXX° ±
 XXXX° ±

IDT 2975 Slender Way
 Santa Clara, CA 95054
 PHONE: (408) 727-6116
 FAX: (408) 492-8674

WWW.IDT.COM

TITLE PK/PKG PACKAGE OUTLINE
 DRAWN 14.0 X 20.0 X 1.4 mm TOPP
 CHECKED 1.00/.10 FORM

APPROVALS	DATE	SIZE	DRAWING NO.	REV
C		C	PSC-4045	03

DO NOT SCALE DRAWING SHEET 1 OF 2

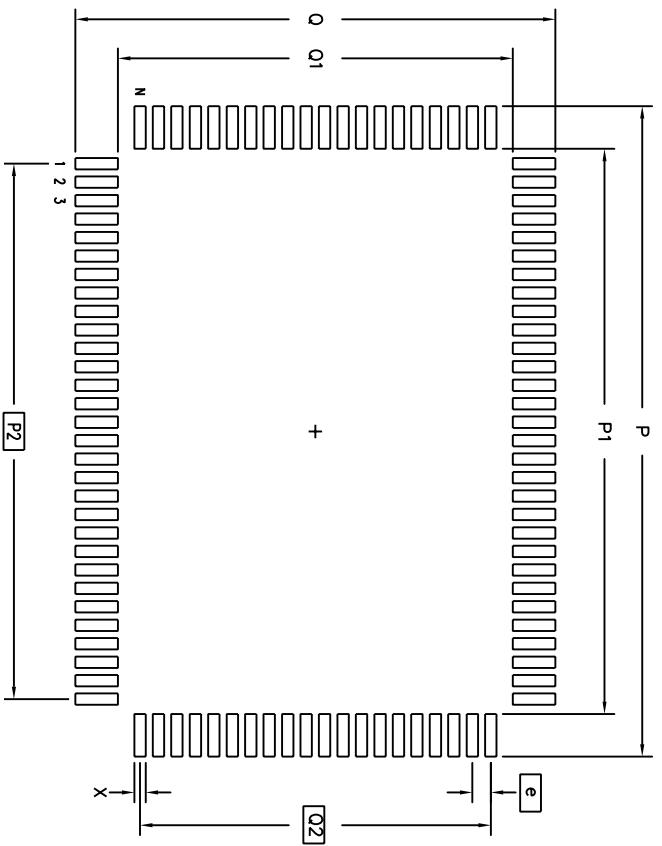
REVISIONS				
DCN	REV	DESCRIPTION	DATE	APPROVED
27389	01	REDRAW TO JEDEC FORMAT	12/12/94	T. VU
	02	CORRECTED DETAIL A	09/13/02	<i>gpa</i>
	03	ADD "GREEN" PKG NOMENCLATURE	10/13/04	<i>gpl</i>

LAND PATTERN DIMENSIONS

SYMBOL	JEDEC VARIATION DU			N D T E	JEDEC VARIATION BX			N D T E
	MIN	NOM	MAX		MIN	NOM	MAX	
A	—	—	1.60		—	—	1.60	
A1	.05	.10	.15		.05	.10	.15	
A2	1.35	1.40	1.45		1.35	1.40	1.45	
D		22.00 BSC		4		22.00 BSC		4
D1		20.00 BSC		5.2		20.00 BSC		5.2
E		16.00 BSC		4		16.00 BSC		4
E1		14.00 BSC		5.2		14.00 BSC		5.2
N		100				128		
ND		30				38		
NE		20				26		
e		.65 BSC				.50 BSC		
b	.22	.32	.38	7	.17	.22	.27	7
b1	.22	.30	.33		.17	.20	.23	
ccc	—	—	.10		—	—	.08	
ddd	—	—	.13		—	—	.08	

NOTES:

- 1 ALL DIMENSIONING AND TOLERANCING CONFORM TO ANSI Y14.5M-1982
- 2 TOP PACKAGE MAY BE SMALLER THAN BOTTOM PACKAGE BY .15 mm
- 3 DATUMS [A-B] AND [-D-] TO BE DETERMINED AT DATUM PLANE [-H-]
- 4 DIMENSIONS D AND E ARE TO BE DETERMINED AT SEATING PLANE [-C-]
- 5 DIMENSIONS D1 AND E1 DO NOT INCLUDE MOLD PROTRUSION. ALLOWABLE MOLD PROTRUSION IS .25 mm PER SIDE. D1 AND E1 ARE MAXIMUM BODY SIZE DIMENSIONS INCLUDING MOLD MISMATCH
- 6 DETAILS OF PIN 1 IDENTIFIER IS OPTIONAL BUT MUST BE LOCATED WITHIN THE ZONE INDICATED
- 7 DIMENSION b DOES NOT INCLUDE DAMBAR PROTRUSION. ALLOWABLE DAMBAR PROTRUSION IS .08 mm IN EXCESS OF THE b DIMENSION AT MAXIMUM MATERIAL CONDITION. DAMBAR CANNOT BE LOCATED ON THE LOWER RADIUS OR THE FOOT.
- 8 EXACT SHAPE OF EACH CORNER IS OPTIONAL
- 9 THESE DIMENSIONS APPLY TO THE FLAT SECTION OF THE LEAD BETWEEN .10 AND .25 mm FROM THE LEAD TIP
- 10 ALL DIMENSIONS ARE IN MILLIMETERS
- 11 THIS OUTLINE CONFORMS TO JEDEC PUBLICATION 95 REGISTRATION MO-136, VARIATION DJ AND BX



	MIN	MAX	MIN	MAX
P	22.80	23.00	22.80	23.00
P1	19.80	20.00	19.80	20.00
P2	18.85	BSC	18.50	BSC
Q	16.80	17.00	16.80	17.00
Q1	13.80	14.00	13.80	14.00
Q2	12.35	BSC	12.50	BSC
X	.30	.50	.30	.40
e	.65	BSC	.50	BSC
N	100		128	

TOLERANCES UNLESS SPECIFIED		<p>2975 Stender Way Santa Clara, CA 95054 PHONE: (408) 727-6116 FAX: (408) 492-8674</p>
DECIMAL	ANGULAR	
XXX	°	
XXXX		
APPROVALS	DATE	TITLE
DRAM		PK/PKG PACKAGE OUTLINE
CHECKED		14.0 X 20.0 X 1.4 mm TOPP
		1.00/.10 FORM
SIZE	DRAWING NO.	REV
C	PSC-4045	03
DO NOT SCALE DRAWING		SHEET 2 OF 2